

This is the journey of a

Solo Space Tour Client

A LunaSee client has selected and purchased their solo space tour which includes a rental for our top of the line LunaSee shuttle.

As part of the tour package, the client will begin a hybrid training program to learn how to operate the shuttle during their trip. This first module, LunaSee Shuttle Overview introduces the craft's features to prepare for the virtual reality training that follows.

Key goals and needs

- Make sure the client can define each key section of the craft
- Make sure client can list the safety features

Key pains and constraints

- Clients have different levels of experience (e.g. repeat trips)
- Clients live in different areas
- Training programs must be available 24/7

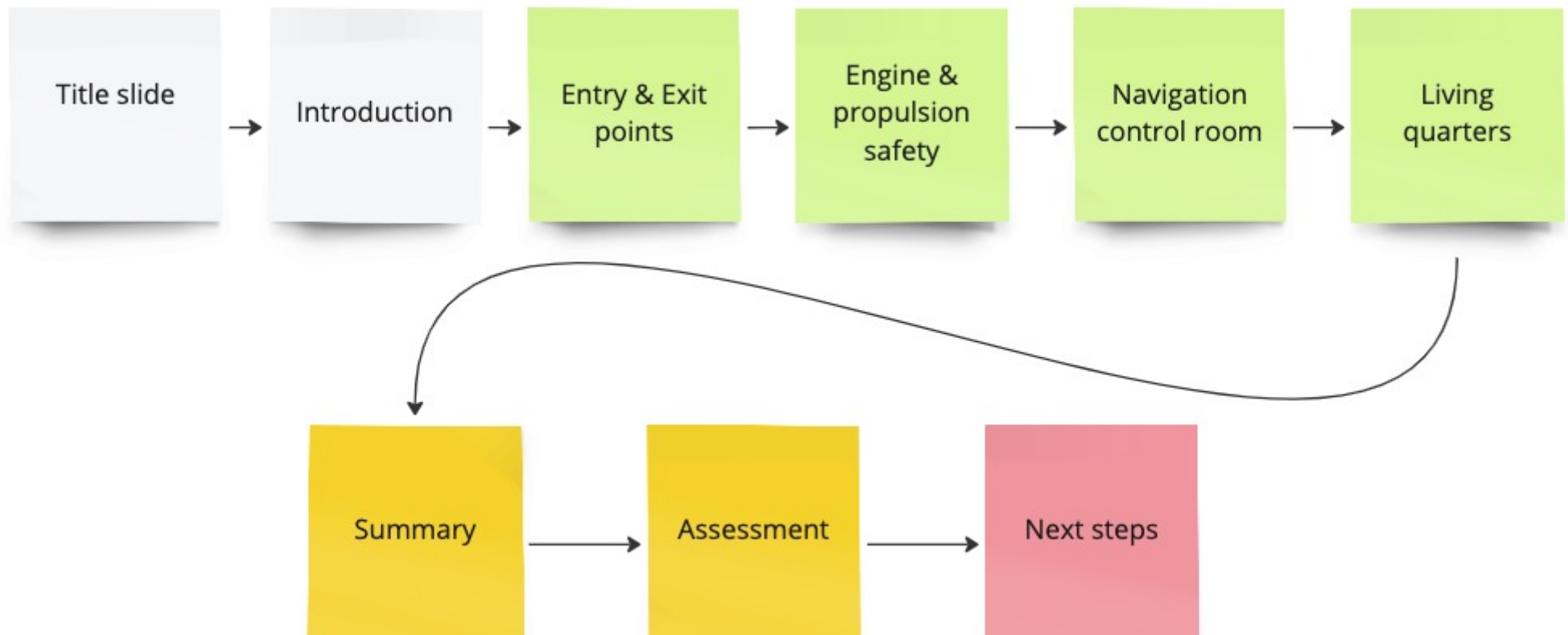
Context

- Training is run remotely
- Clients need access to the training portal

Key activities and tasks

- Invite everyone and share materials
- Conduct training
- Ensure client understands the outcomes
- Document and share results
- Unlock next portion of training experience after completion

Course Outline



Introduction

Topic 1

LunaSee Shuttle Overview

We'll review key shuttle components and safety features:

- Entrances and exits
- Engines & Propulsion Safety
- Navigation Controls
- Living Quarters

Examine My Knowledge

Greetings and welcome to the LunaSee Shuttle Overview! I'm Fuchsia, your guide for this course. Congratulations on booking your very own solo space flight! The next step is to start learning how to fly your craft. In this first module, you'll get familiar with the basics of your space craft, inside and out, including:

Entrances and exits
Engines & Propulsion Safety
Navigation control room
Living quarters

After you've completed this module, you can book your flight training program!

If you're a returning client and already know this shuttle inside and out, select the Examine My Knowledge button to complete the final assessment.

To adjust the course controls, select Settings in the top right corner of the screen at any time.

Let's get started!

Graphic of the shuttle
Highlight each area that will be reviewed w/ animations and call-outs

Use AI neural net voices

Examine My Knowledge button jumps to the final assessment to test out.

Settings in player light box controls to remove background music, use light mode and review player controls

Enter and exit the craft

Topic 2

Enter and Exit the ship

All entry points can be opened and closed using your remote or manually.

On screen

Port (left)
Starboard (right)
Emergency hatch

We'll begin at the beginning. How to get in and out of the craft!

There are three entry points:
Port door
Starboard door
Emergency hatch

Select each entry point to learn more.

Script

The port, or left side and starboard, right side, doors will open with your remote control and will extend the walkway ramp. The ramp is helpful when you're loading your cargo.

The emergency hatch is located above the navigation control room. It's designed to be used only in emergencies or during maintenance in zero gravity. It's an important safety feature. Quickly exit the ship when the onboard AI announces an emergency exit is needed.

Programming and graphics

Graphics:
shuttle door and hatch callouts showing each location
remote control image
Door knob mechanism

AI neural voices

animate in overlay with images of the controller and door handle

Knowledge check

Multiple choice

Which entry point is used for emergency and maintenance only?

Port door
Starboard door
*Emergency hatch

Engines & Propulsion Safety	
Topic 3	
On screen	<p>Engine & Propulsion Safety</p> <p>Zero engine system accidents in LunaSee history</p> <p>Launch proximity sensor Auto positioning for launch Enclosed engine system Lunabot automatic repairs</p>
Script	<p>Your LunaSee shuttle is equipped with the latest in rocket engine technology. It'll achieve gravity escape velocity to lift off from any planet, asteroid or moon in about 2 minutes! Once you're on your way, enjoy several cruising speeds ranging from impulse speed to warp 5.</p> <p>With all that power you may be wondering about safety. Rest assured, there are several safety mechanisms in place. There has never been an engine system mishap in LunaSee history. Here's why!</p> <p>First, there is a proximity sensor that will extinguish the burner sequence if any living organism is within the 100 foot blast zone. The craft will switch into hover mode to reposition itself to a safe zone for takeoff.</p> <p>Second, the engine and propulsion system is encased in a self contained compartment. If any maintenance is needed during your trip, a fleet of lunabots will deploy automatically to make repairs.</p>
Programming & graphics	<p>Show each safety feature w/ graphic with narration:</p> <p>Blast zone Safety zone Closed off Nanobots</p>
Knowledge check	<p>Multiple select</p> <p>Select the four (4) LunaSee shuttle engine and propulsion safety features.</p> <p>*Launch proximity sensor *Auto positioning for launch *Enclosed engine system *Lunabot automatic repairs Automatic cargo ramp</p>

Navigation control room	
Topic 4	
On screen	<p>Navigation control room</p> <p>Select each marker to get to know the navigation room.</p> <p>Bow of the ship 360 degree view screen Navigation assistant Auto or manual control modes Pre-built destination routes</p>
Script	<p>Now we get to the exciting part - flying the craft! Go ahead and take a look around. Select each marker to get to know your control room features.</p> <p>Marker 1 audio The navigation control room is where you'll experience the thrills of galactic travel! Located at the bow of the ship, it has a 360 degree view screen to enjoy the great expanse of space.</p> <p>Marker 2 audio The state of the art navigational assistant is always online to lend a hand with any bump in the road.</p> <p>Marker 3 audio Use auto or switch to manual controls to make your trip your own.</p> <p>Marker 4 audio Not sure where to go? Not to worry, there are several pre-built routes to explore the most popular destinations.</p>
Programming & graphics	<p>Graphics Control room Markers</p>
Knowledge check	<p>Hotspot</p> <p>Where is the navigational assistant? (Image of the control room w/ markers)</p>

Living quarters	
Topic 5	
On screen	<p>Living quarters</p> <p>Includes:</p> <p>Sleeping area Storage Bathroom Exercise equipment Entertainment center Dining room</p>
Script	<p>After zooming around the galaxy, you'll want to kick back and relax in your living quarters next!</p> <p>Your cabin is customizable based on your trip package, but every shuttle includes the following areas: sleep, storage, bath, exercise, entertainment and dining.</p> <p>For safety reasons, while the shuttle is in the take off or landing sequence, the bath, dining and exercise areas are automatically deactivated and equipment is stowed.</p>
Programming & graphics	<p>Graphic of cabin Icons for each amenity Highlight areas that are not active during take off and landing.</p>
Knowledge check	<p>Which areas of the living quarters are deactivated and stowed during take off and landing sequences?</p> <p>*Bathroom *Dining *Exercise Entertainment Sleeping Storage</p>

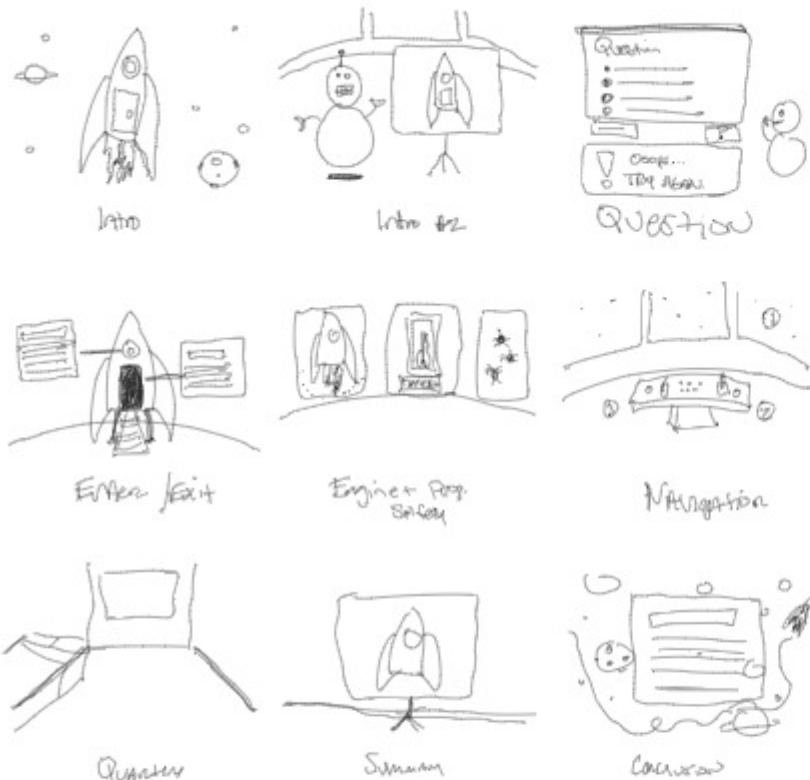
Summary	
On screen	<p>Summary</p> <p>Examine My Knowledge</p>
Script	<p>Great work! You're almost done! You've learned all about the shuttle's Entry and exit points Engine and propulsion safety Navigation control room and living quarters.</p> <p>It's time to take the final exam!</p> <p>Each question has unlimited attempts but you'll need to pass with 100% to continue.</p> <p>Good luck!</p>
Programming & graphics	<p>Robot</p> <p>Space w/ planets</p> <p>Examine My Knowledge button starts test</p>

Question slides	
On screen	<p>Question</p> <p>Answers</p> <p>Review Topic button</p>
Script	[read question text]
Programming & graphics	<p>Use same questions as knowledge checks</p> <p>Review topic button light box topic slide</p>

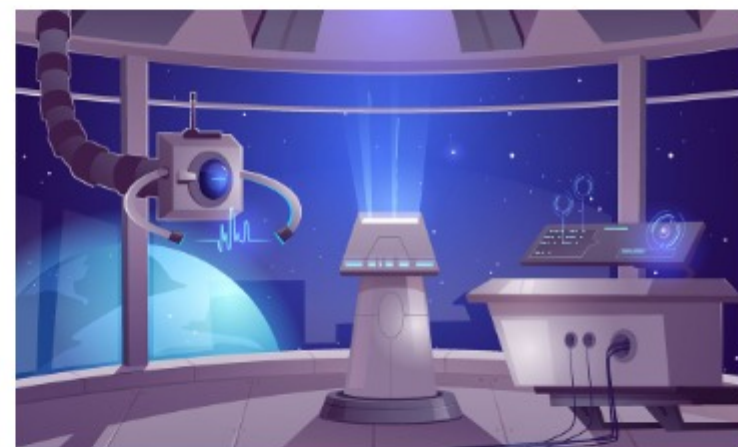
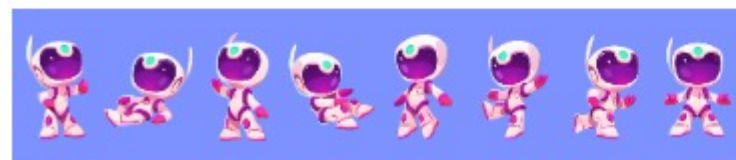
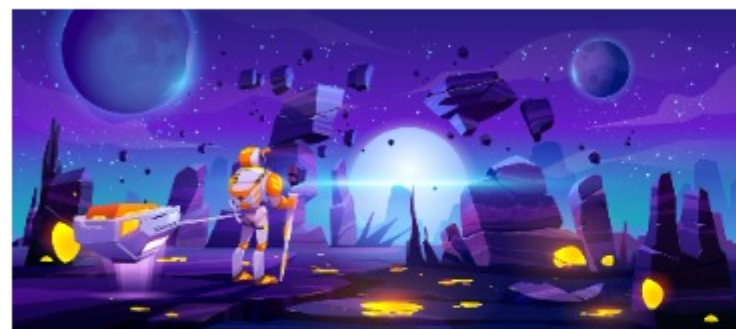
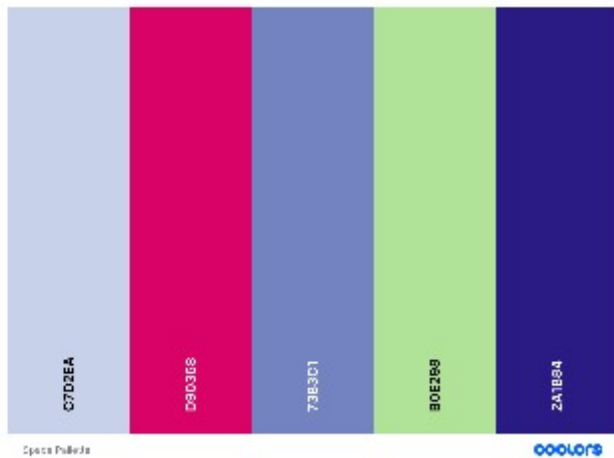
Results	
On screen	Exam Results
Script	<p>Passing: You're a space wiz! Great work.</p> <p>Failing: Hmm not quite. Try again, you'll get it next time!</p>
Programming & graphics	sound effects for pass / fail

Conclusion	
On screen	<p>You're on your way!</p> <p>You'll be contacted shortly with instructions for starting your virtual reality space flight simulator.</p> <p>Once you've completed your flight simulator certification, you're ready to take off!</p>
Script	<p>You're on your way!</p> <p>You'll be contacted shortly with instructions for starting your virtual reality space flight simulator.</p> <p>Once you've completed your flight simulator certification, you're ready to take off!</p>
Programming & graphics	<p>Background musi</p> <p>Shuttle zooming away</p>

Thumbnails



Mood Board



Vector graphics from: [Vecteezy.com](https://www.vecteezy.com)

Slide prototypes



LunaSee Shuttle Overview

Introduction

Greetings and welcome to the LunaSee Shuttle Overview! I'm **Fuchsia**, your guide for this course.

Congratulations on booking your very own solo space flight! The next step is to start learning how to fly your craft. In this first module, you'll get familiar with the basics of your space craft, inside and out, including:

- Entry and exit points
- Engine and propulsion safety
- Navigation controls
- Living quarters



Select the right arrow to move forward in the course, the left arrow to go back.



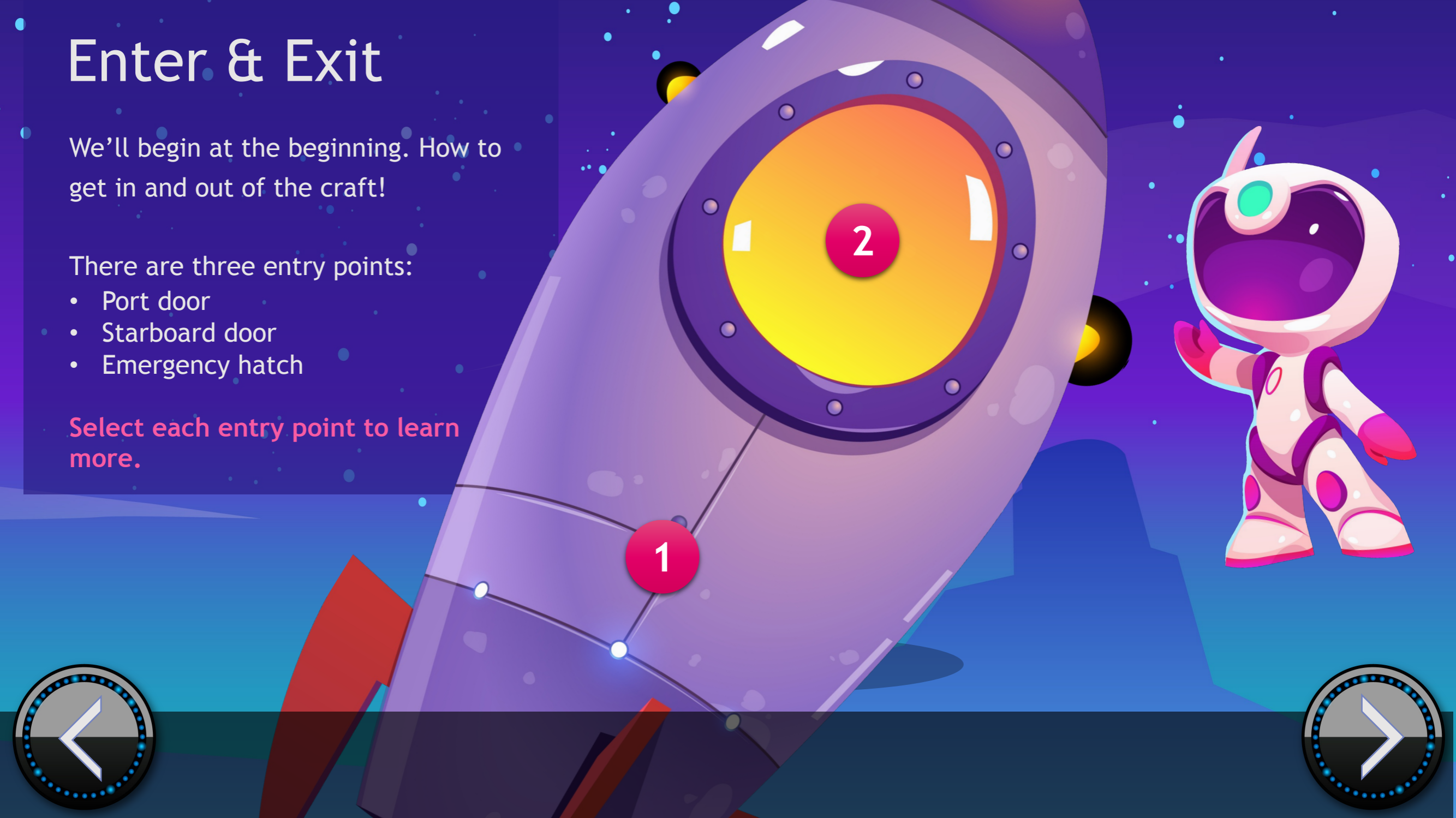
Enter & Exit

We'll begin at the beginning. How to get in and out of the craft!

There are three entry points:

- Port door
- Starboard door
- Emergency hatch

Select each entry point to learn more.



Enter & Exit

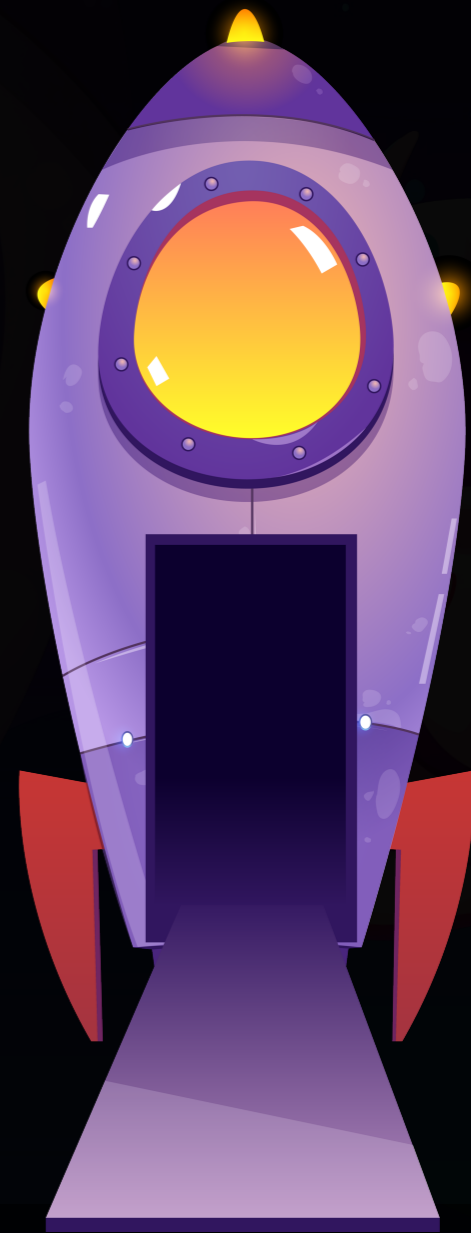
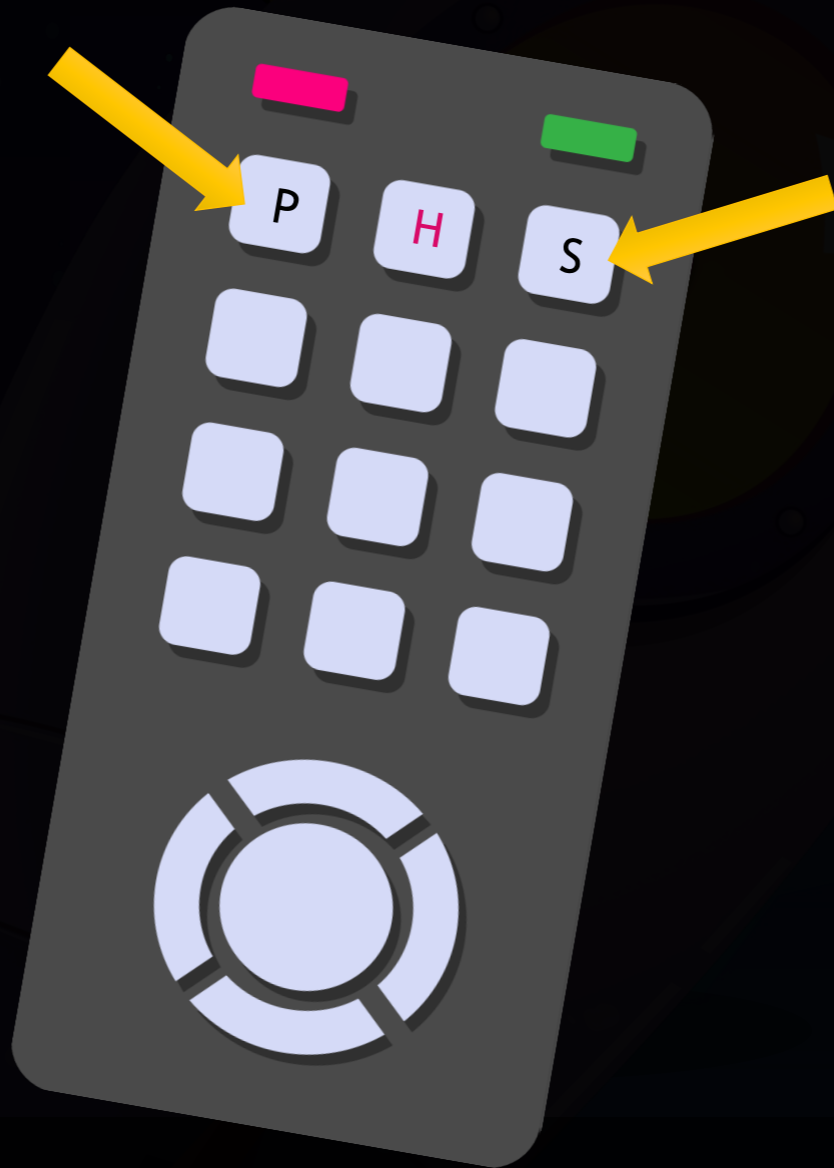
Doors

We'll begin at the beginning. How to get on and off the rocket.

The **port** (left) side and **starboard** (right) side doors will open with your remote control and will extend the walkway ramp. The ramp is helpful when you're loading your cargo.

To open the port side door, use the **P** button on the remote.

To open the starboard side door, use the **S** button on the remote.



X

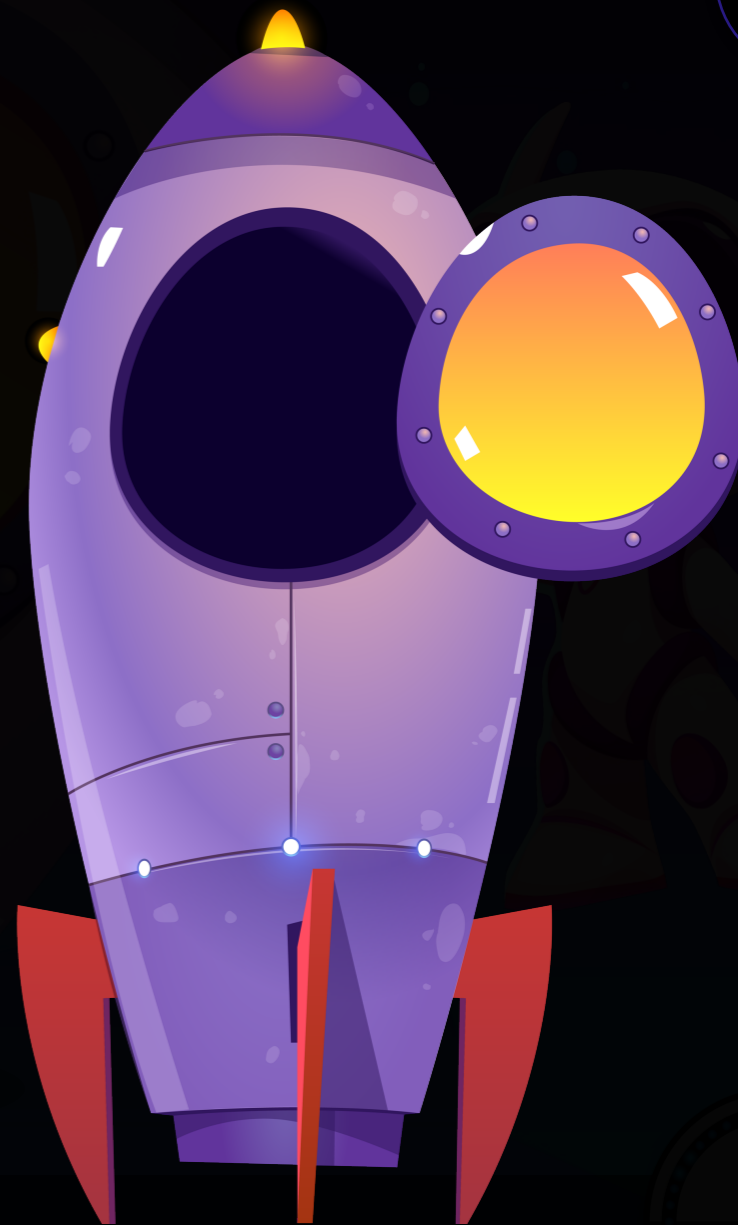
Enter & Exit

Emergency Hatch

The emergency hatch is located above the navigation control room. This important safety feature is designed to be used only in emergencies or during maintenance in zero gravity.

Quickly exit the ship when the onboard AI assistant announces an emergency exit is needed.

The **H** button on the remote controls the emergency hatch.



Engine & Propulsion Safety

Your LunaSee shuttle is equipped with the latest in rocket engine technology. With all that power you may be wondering about safety. Rest assured, there are several safety mechanisms in place.

First, there is a **proximity sensor** that will extinguish the burner sequence if any living organism is within the 100-foot blast zone.

Second, the engine and propulsion system is encased in a **self-contained compartment**. If any maintenance is needed during your trip, a fleet of **lunabots** will deploy automatically to make repairs.



WARNING:
ENGINE CONTAINMENT





ACCES
GRANTED



Navigation Control Room

Now we get to the exciting part - flying the craft!
Go ahead and take a look around. **Select each number marker to get to know your control room features.**

2

X

Control Modes

Use auto or switch to manual controls to make your trip your own.

4

3



Living Quarters

After zooming around the galaxy, you'll want to kick back and relax in your living quarters next!

Your cabin is customizable based on your trip package, but every shuttle includes the following areas: sleep, storage, bath, exercise, entertainment and dining.

For safety reasons, while the shuttle is in the take off or landing sequence, the bath, dining and exercise areas are automatically deactivated, and equipment is stowed.



QUESTION 1

What are the entry and exit points for the shuttle? **Select 3 choices.**

- Port side door
- Starboard side door
- Emergency Hatch
- Propulsion pod

SUBMIT

?

